

# SUNPIPE™

TUBULAR SKYLIGHTS

300mm  
Sunpipe  
installation  
**corrugated  
roof**



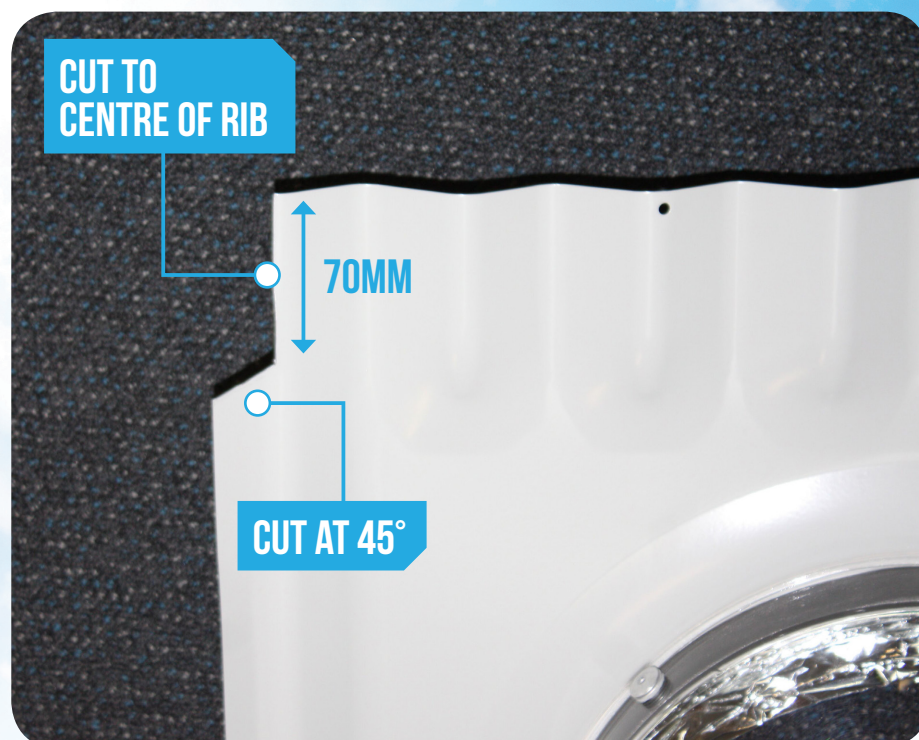
**SKYSPAN**  
AUSTRALIA PTY LTD

1300 SKYSPAN  
[www.skyspan.com.au](http://www.skyspan.com.au)

# 1

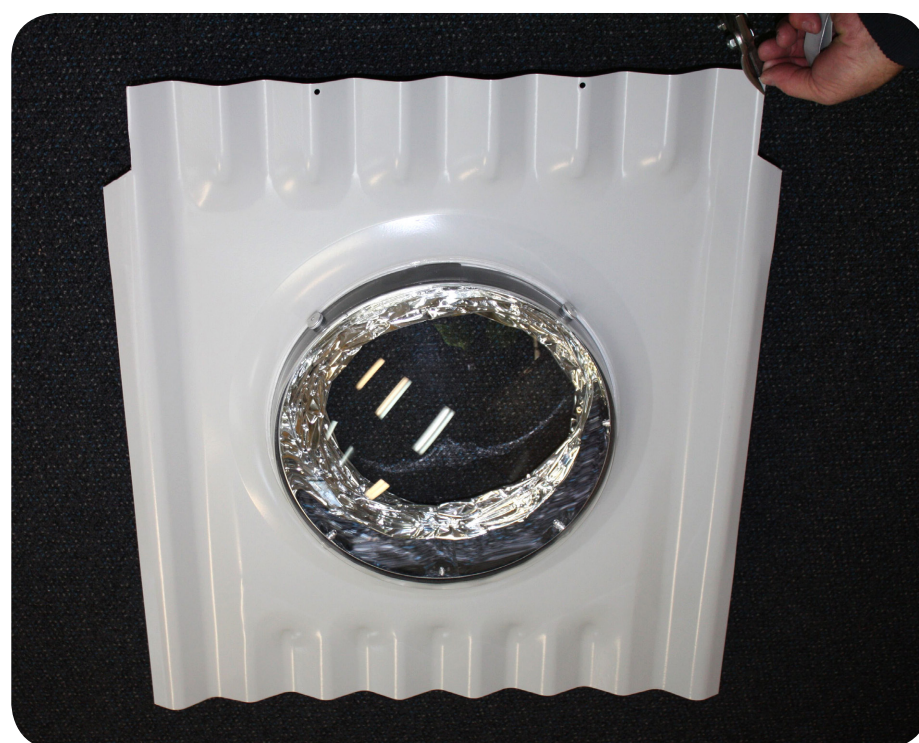
On the top left side of the flashing mark a line at the centre of the first corrugation. Draw a line 70mm down from the top of the flashing in the centre of the corrugation.

From the bottom of the line draw another line at 45° to the outside of the flashing. Repeat on the other top right side of the flashing.



# 2

Using tin snips follow the line to cut out the shape.



**3**

**Determine the position for the skylight installation.**

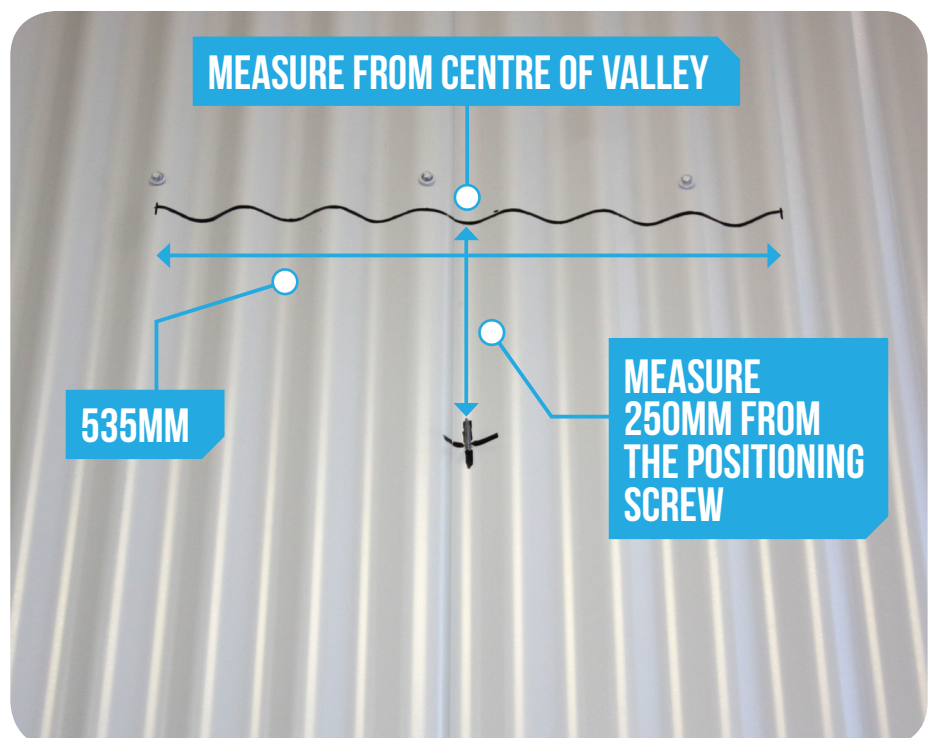
**From inside the roof/attic space (where possible) drill a screw through the roofs that you can locate the position of the screw whilst on the roof.**



**4**

**From the positioning screw measure 250mm up the roof.**

**From the centre of the corrugation valley draw a 535mm line.**



**5**

Using a strip of cardboard measure 170mm

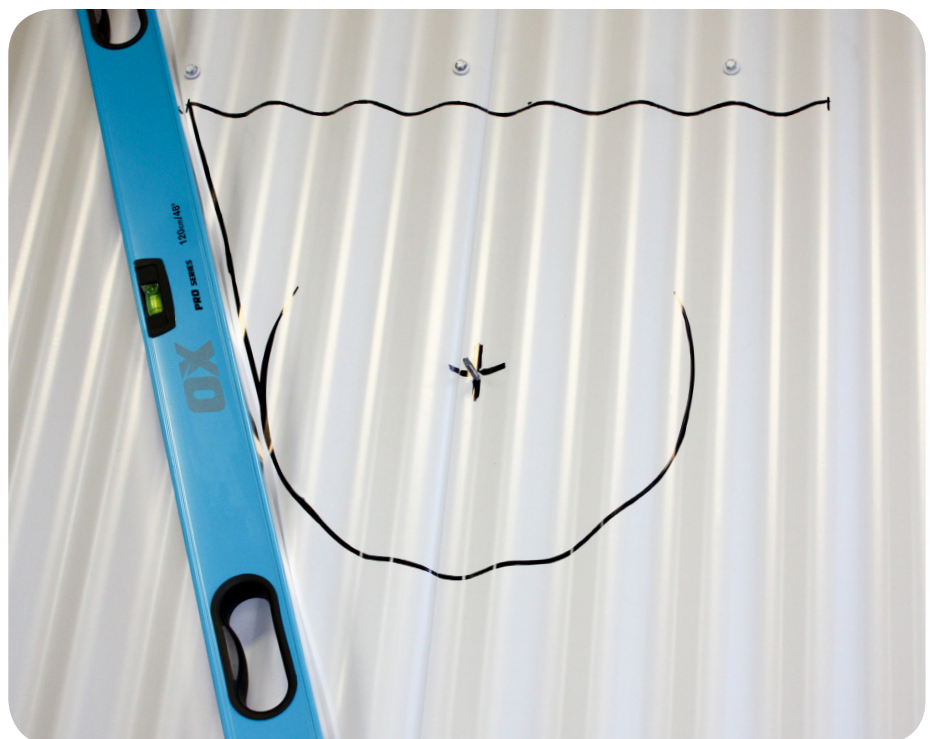
Place the cardboard over the positioning screw and put a marker through the other side at 170mm and mark out a semi-circle under the screw



**6**

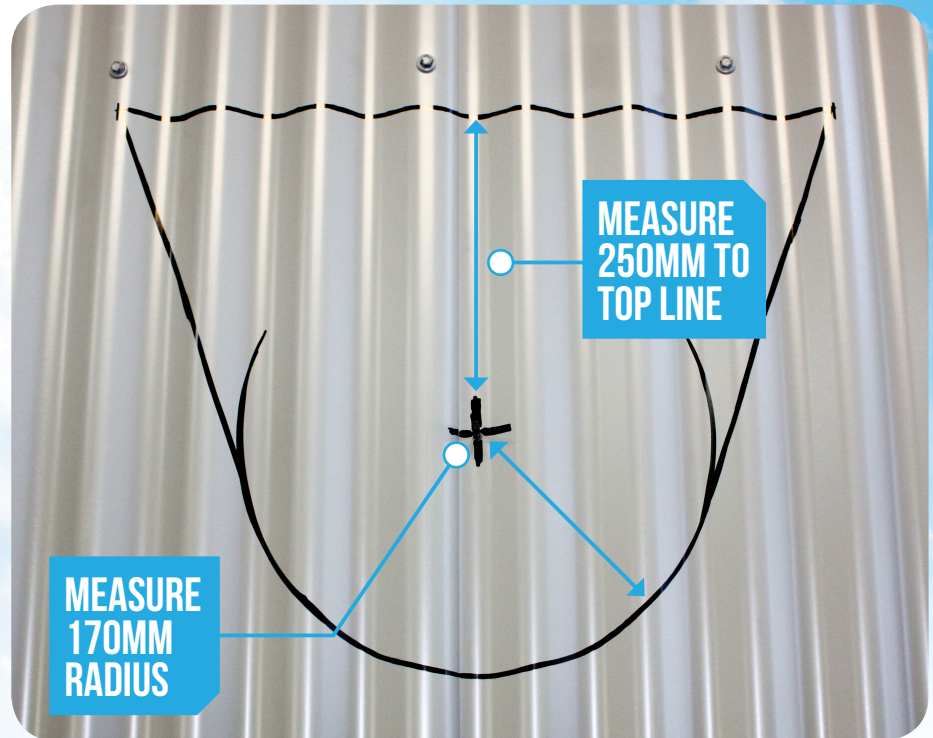
Using a straight edge mark a line from the outside of the top line to the outside of the semicircle.

Repeat on the opposite side.



7

Completed cut out marking ready for cutting.



8

Cut the shape out using a hacking knife and/ or tin snips.

**NOTE:** Do not use angle grinder.



9

Weather the front of the cut out using pliers to bend the sheet upwards.



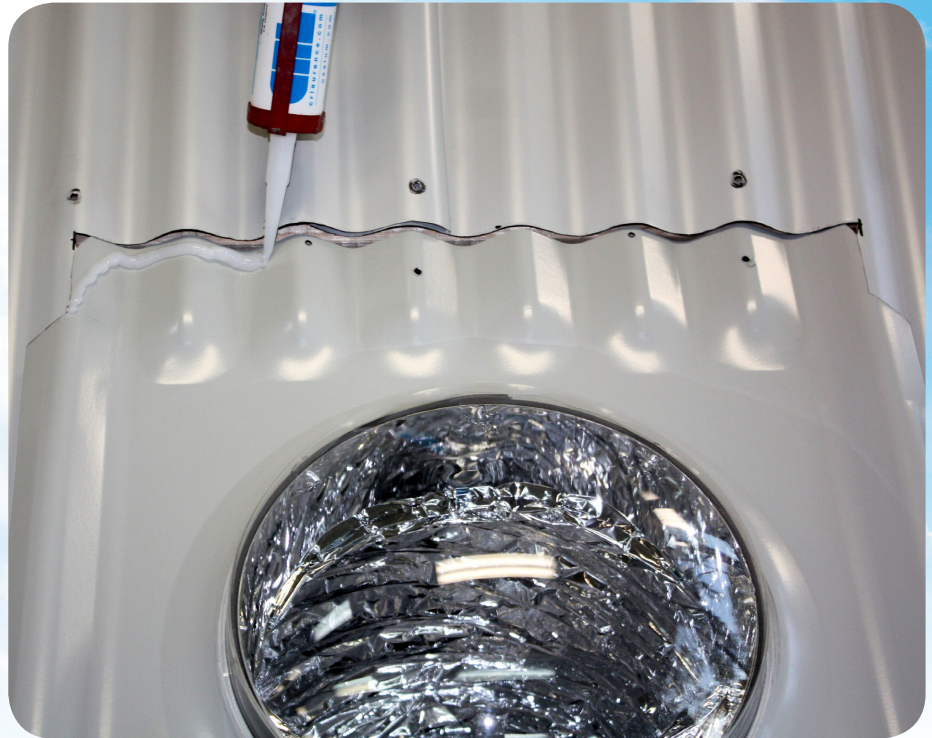
10

Apply Silicon as shown on line shows above



**11**

**Apply Silicon to top of flashing.**



**12**

**Apply Silicon to roof sheeting as shown on drawing.**

**Apply Silicon directly below cut out following the top of the ridge down the roof for 200mm.**



**13**

**Apply silicon to  
roof sheeting below  
flashing.**



**14**

**Firstly insert the  
flexible shaft into the  
penetration.**

**Insert the Sunpipe  
flashing into the cut out  
in the roof.**





**15**

**Sunpipe is now ready for fixing.**



**16**

**Starting from the front of the flashing, proceed to secure the flashing with tek-screws.**



17

Secure the Sunpipe flashing with 4 or more screws at the front of the flashing and 3 screws at the back of the flashing.

Sunpipe is now fully flashed and sealed to the roof.



#### Disclaimer

- Sunpipe must be installed by a competent licenced tradesman.
- Silicon must be Roofing grade Silicon.
- Fixing screws must be roofing screws.



1300 SKYSPAN  
[www.skyspan.com.au](http://www.skyspan.com.au)